



# **SUSTAINABLE CONSUMPTION AND PRODUCTION in INDONESIA**

Noer Adi Wardoyo  
Head Of Center for Environment and Forestry Standards

**Ministry of Environment and Forestry  
Republic of Indonesia**



# Outline

- SCP
  - Global commitments
  - One planet network
- SCP Indonesia
  - Principles
  - Plan of attack
  - Systemic Change
  - SCP Walk the Talk

## RIO DECLARATION ON ENVIRONMENT AND DEVELOPMENT (1992)

- Principle 8 :
- To achieve sustainable development and a higher quality of life for all people, States should **reduce and eliminate unsustainable patterns of production and consumption** and promote appropriate demographic policies.

## SDGs (2015)

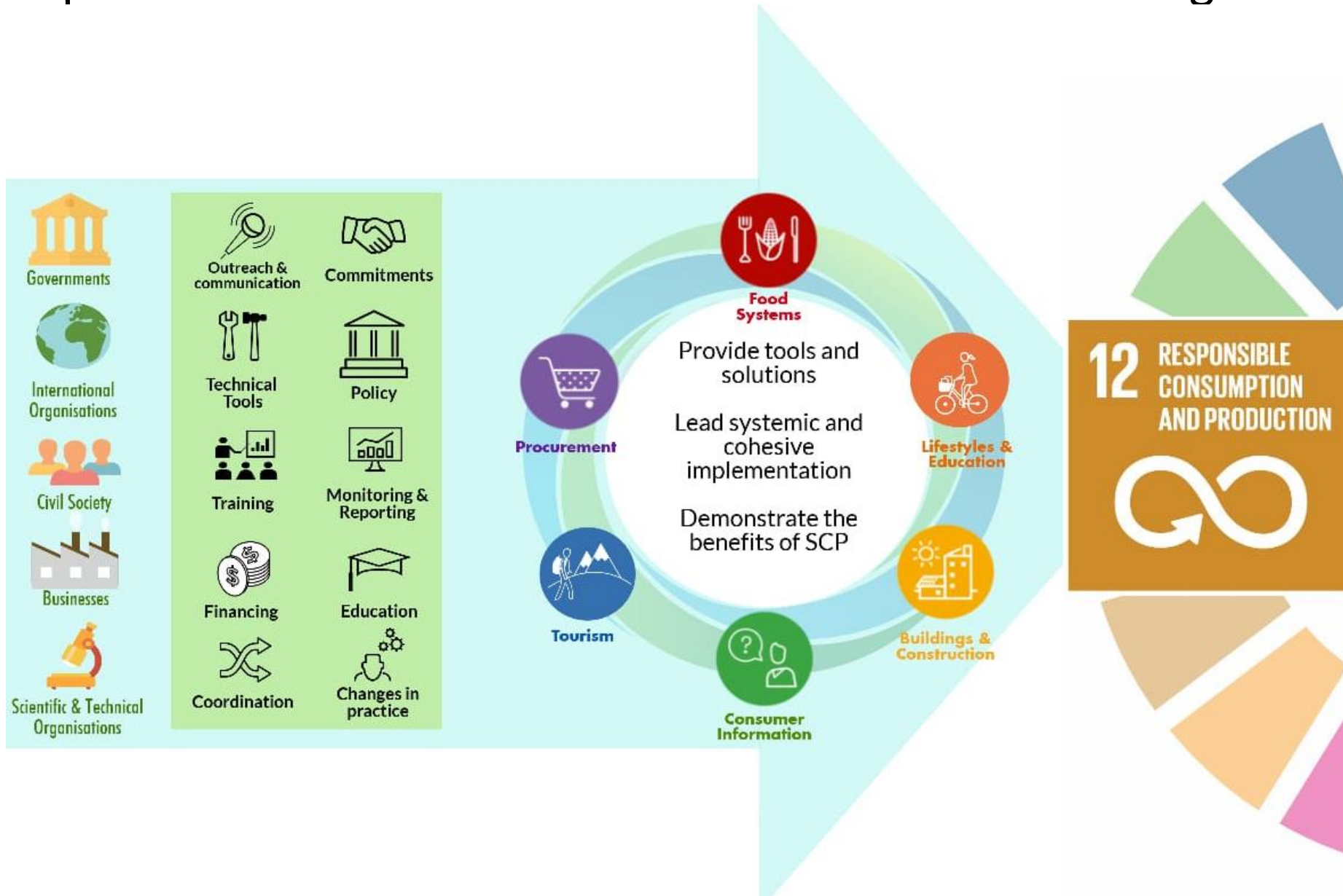
- Goal 12:
- Ensure Sustainable Consumption and Production Pattern
- 8 Targets, 3 Means of Implementations

## PARIS AGREEMENT (2015)

- ... Also recognizing
- that **sustainable lifestyles and sustainable patterns of consumption and production**, .... play an important role in addressing climate change, ....

# The One Planet Network :

implementation mechanism for Goal 12 of UN 2030 Agenda



**SCP INDONESIA**

SCP LANDSCAPE  
PLAN OF  
ATTACK  
INDONESIA

THEMATIC SCP CONTENT

Climate Change, Chemical (12.4), Resource Efficiency (12.2), Waste Management (12.4), Waste Reduction (12.5)

Water, Food (12.3), Energy Use, Plastic, and other materials use

Aspiration from  
Rio Declaration  
1992

Ultimate aim/  
objective

2013 onwards

2020 onwards

SCP on the ground

OPERATIONAL BUSSINESS  
PROCESS CHANGE

GOVERNMENT

BUSSINESSS

SOCIETY  
COMMUNITY

Eco-Office  
GPP (12.7)

Standards best practices  
12.6

Public facility, community  
of practice

Lifestyle 12.8

BUSINESS PLANING CYCLE

“Enabler: Financing, Science and Technology (12.a), Education and Competence, Information”

SECTORAL SCP  
POLICY

INDUSTRY  
TOURISM (12.b)  
PUBLIC WORKS  
ENERGY (incl. 12.c)  
TRANSPORTATION  
AGRICULTURE  
BUILDING/HOUSING

DEVELOPMENT  
PLANING CYCLE

SCP Communities of Practice, Platform for Sharing and  
Collaboration

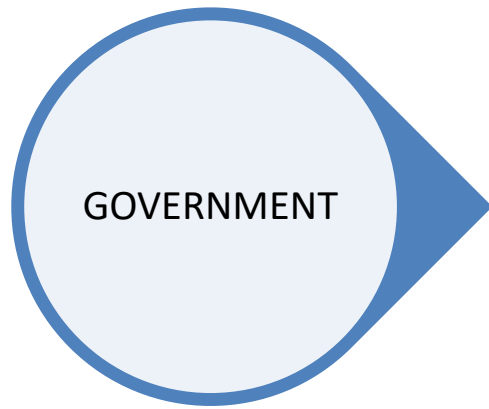
SCP MAIN STREAMED IMPLEMENTED

SCP top down

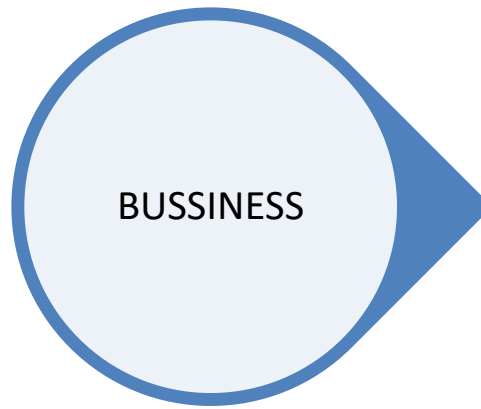
# Indonesia Principles to advance SCP implementation on the ground

- Aim at systemic and operational approach,
- Be integrative in addressing environmental challenges, encourage to start from simple and improve continually
- collective efforts and inclusive for all stakeholders
- encourage bottom-up approach and connect with government and enablers support

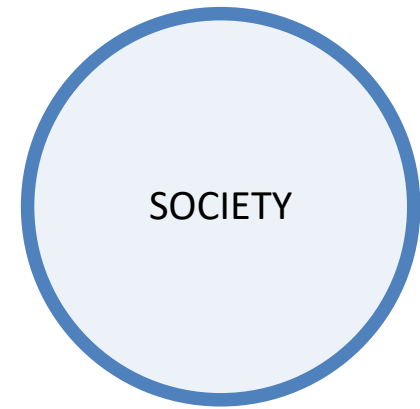
# SCP Indonesia : Systemic Change



GOVERNMENT



BUSSINESS



SOCIETY

<b>Eco-office (Green Office)</b>  <b>Green Public Procurement (12.7 SDGs)</b>  <b>Green Product List (12.7 SDGs)</b>	<b>Environmental Management System Standard (12.6 SDGs)</b> <b>Ecolabel standards for environmentally friendly products / Ecolabel (12.7 SDGs)</b>  <b>Environmental Technology Verification</b>  <b>Green Financing and incentives</b>	<b>Education, Information and facilities in public area towards green lifestyle as in Standard Services for Public Facilities (SPM-FP) - (12.8 SDGs)</b>  <b>Secondary material towards circular economy</b>
--	--	--



# Government

## **Supporting Program/Scheme for Bussiness:**

- Source : Indonesia Legal Wood by MoEF
- Efficiency : Energy Efficiency Labeling by MoEMR
- Ekolabel Indonesia (Indonesia ecolabel) MoEF
- Sustainable Tourism by MoT
- Green infrastructure and green building by MoPW
- etc

## **Policy in Creating Demand :**

- Green Public Procurement (cross ministries and gov't institutions)

## **Change in Operational :**

- Eco Office

# Bussiness

## **Green Financing by the Financial Services Authority (OJK)**

- **Managed Areas :**
  - Sustainable reporting : Financial Services Institutions (LJK), Listed company (emiten), and public Company mandatory (gardually) to submit sustainable reporting (POJK 51/2016)
  - Green bond (POJK 60/2017)
- **Potential area : FinTech / Peer to Peer (p2p) lending : 67 registered company, lending accumulation July 2018 : Rp 9,21 trillion\***

## **New Services and Startups**

- **Start up circular economy : mallsampah.comSampahmuda.com Bebassampah.id etc**
- **New services : zero waste to landfill by waste4change.com , green cleaning services by APKLINDO (Cleaning Service Association Company Indonesia), etc**

## **Commitments**

- **The Indonesia Business Council for Sustainable Development (IBCSD) and the Indonesia Chambers of Commerce and Industry (KADIN Indonesia): Indonesia Vision 2050 project to develop a business view of a sustainable and sustaining civilization**

\* = <https://www.ojk.go.id/id/berita-dan-kegiatan/siaran-pers/Documents/Pages/Siaran-Pers-Satgas-Kembali-Temukan-182-Fintech-Peer-To-Peer-Lending-Tanpa-Izin/180905%20Statistik%20Fintech%20Lending%20Indonesia-in%20Bahasa.pdf>

# Society

- **Rising in public awareness and action :**
  - World clean up day 2018 in Indonesia: more than 7,6 million volunteers and 14,8 million kg of waste\*
- **Sociopreneur in circular economy :**
  - Waste bank initiatives : 5.244 Waste Bank in Indonesia (2018) with 1,7% contribution minimizing national waste generation (DG Waste Management, Toxic and Hazardous Waste - MoEF\*\*)
- **Bottom-up Approach - Community initiatives**
  - Food loss initiatives (indonesiafoodbank.com foodbankindonesia.org gardapangan.org etc)
  - Sustainable event practice (#goodevent by clean action network, #lesswasteevent, etc)
- **Collaborating in Public Facilities toward Green Life Style**
  - MoEF Decree 90/2017 : standards supporting stake holder collaboration toward green lifestyle in public facilities

\* = [https://www.instagram.com/p/BojXp8fnlSH/?utm\\_source=ig\\_web\\_copy\\_link](https://www.instagram.com/p/BojXp8fnlSH/?utm_source=ig_web_copy_link)

\*\* = [http://ppid.menlhk.go.id/siaran\\_pers/browse/1166](http://ppid.menlhk.go.id/siaran_pers/browse/1166)

# Bottom Up Approach : Standard X Series (eXperiential Series Standard)



## STANDAR X

### #GoodEvent

- The initial of Standard X
- Collaboration with Indonesia Clean Action Network
- Simple sustainability practice for event managers



- Indonesia (MoEF) innovation in developing standard with bottom up approach
- Simple language for practitioner on the field
- Learning by doing from community, business and expert

## Cleaning Service



- Collaboration with cleaning service provider association
- Based on Guidelines for verification for environmental friendly cleaning service practice
- Self-declared Claim facilitation for Ecolabel type II

## STANDAR X

### Z W T L



- ZWTL = Zero Waste To Landfill
- Collaboration with Waste4Change Inc. (start up company in waste management, from community movement)
- Practice and claim service for building and housing areal managers to avoid their waste streams to landfill

# THANK YOU



**Center for Environment and Forestry Standards  
Ministry of Environment and Forestry  
Republic of Indonesia**



Jl. Gatot Subroto, Gedung Manggala Wanabakti Blok VII Lt. 8,  
Jakarta, Indonesia



(+6221)5733433



pustanlinghut@gmail.com



Facebook : Pusat Standardisasi Lingkungan dan Kehutanan

Twitter : @standar\_klhk

Instagram : @standarklhk

Youtube : Pusat Standardisasi Lingkungan dan Kehutanan